

FLOPSIE WABIT

LEARN TO SEW WITH STUFFING

A LEARNING pattern for beginner sewers



© Pattern Orchard 2017

www.patternorchard.com

#POflopsiewabit

#POlearners

#PatternOrchard

The FLOPSIE WABIT pattern

Learn to sew with stuffing

This pattern has been designed to teach a sewing skill.

The instructions are more detailed than a traditional pattern to better guide you through sewing with stuffing for the first time.

As you progress through the pattern, the shape and construction method of the toy introduces you to different seams and sewing methods.

About the design

The Flopsie Wabbit is designed to make the most of your fabric, be soft and cuddly as well as slim and easy to take with you.

Flopsie has a stuffed head with un-stuffed ears and body.

The seam allowance for this pattern (how far in from the raw edge your stitching needs to be) is 7mm.

Use a medium length stitch (3-3.5)

Table of contents

Fabric guide [page 3](#)

Sewing instructions [pages 4-9](#)

Printing instructions are on [page 10](#)

Pattern pieces to print [pages 11-14](#)



FABRIC

TYPE

For the Flopsie Wabbit, a woven (non stretchy) fabric is used for the back. E.g. quilting cotton, homespun, poplin.

A softer fabric is used for the front, such as minky, fleece or flannelette.

Avoid fabrics that fray easily like muslin, terry towelling, corduroy.

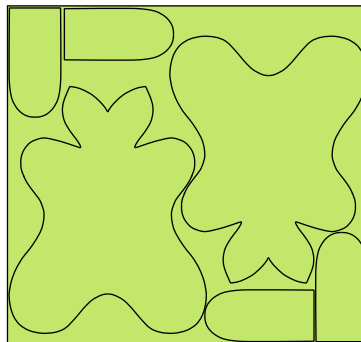
QUANTITY

If using pre-cut Fat Quarters (FQ's 48x52cm),

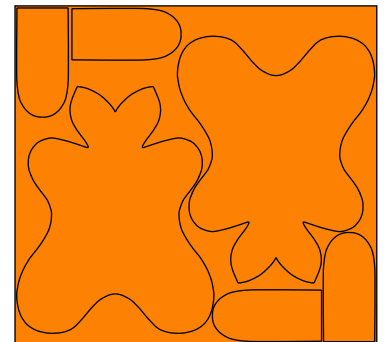
2 complete Wabits can be made from 2x FQ.

(1 FQ of each fabric type)

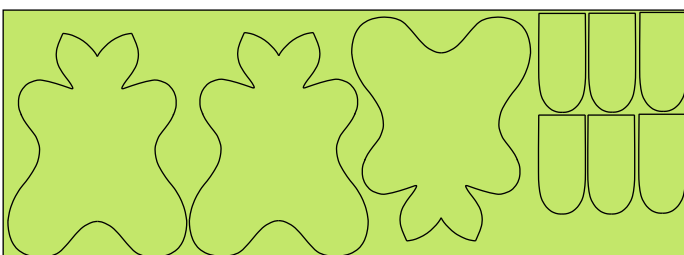
Fleece



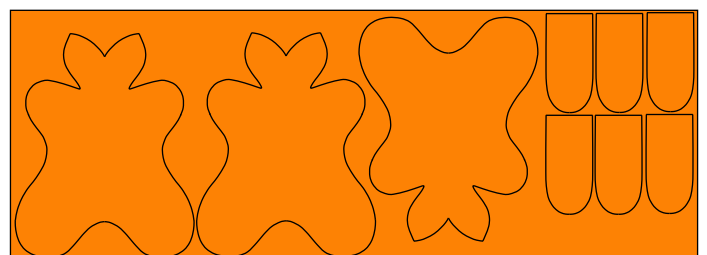
Cotton



For yardage, a 40x110cm cut of both fabrics will make 3 Wabits.



Fleece



Cotton

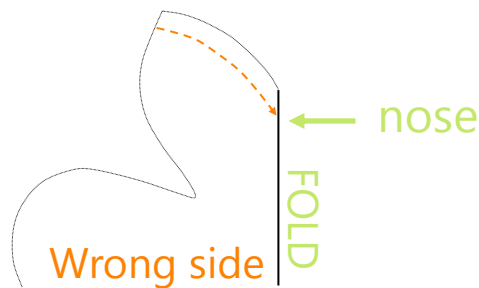
SEWING INSTRUCTIONS

First, check you have cut all 6 pieces. **Fleece:** Body + 2 ears.

Cotton: Body + 2 ears.

STEP 1 :

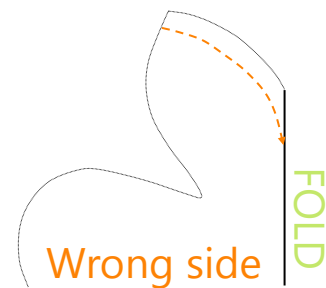
Fold the Body in half symmetrically with right side together. Sew from the top of the head down towards the folded edge.



FRONT: Fleece side

Sew straight toward the folded edge following the curve along the raw edge.

This point will be the nose.



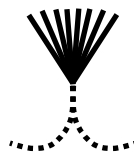
BACK: Cotton side

Sew tapering down slowly toward the folded edge.

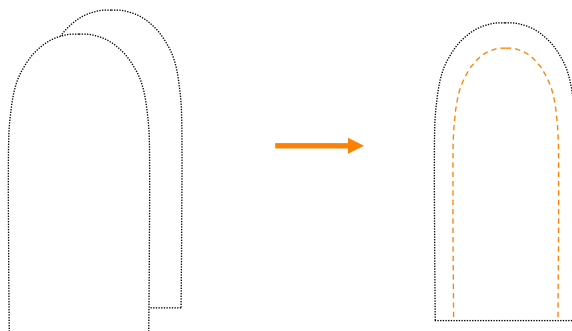
This will be the rounded back of the head.

STEP 2 :

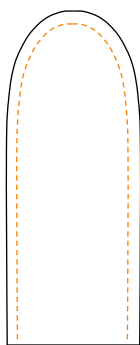
Hand sew your desired face details now. Use embroidery thread and a wide eye darning needle.



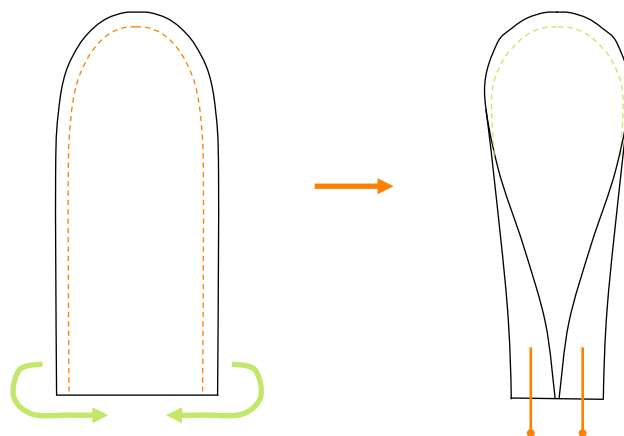
STEP 3 : Place 1 front and 1 back EAR piece right sides together and sew around the edge leaving the bottom flat end open.



STEP 4 : Turn the ear out the right way. Topstitch around the ear, 4mm in from the edge. Ensure you are looking at the cotton side, with the fleece side underneath as you sew.

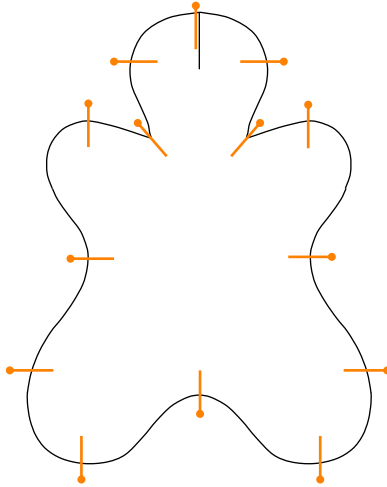


STEP 5 : Fold the bottom of the ear in so the sides meet in the middle. Pin both sides in place.

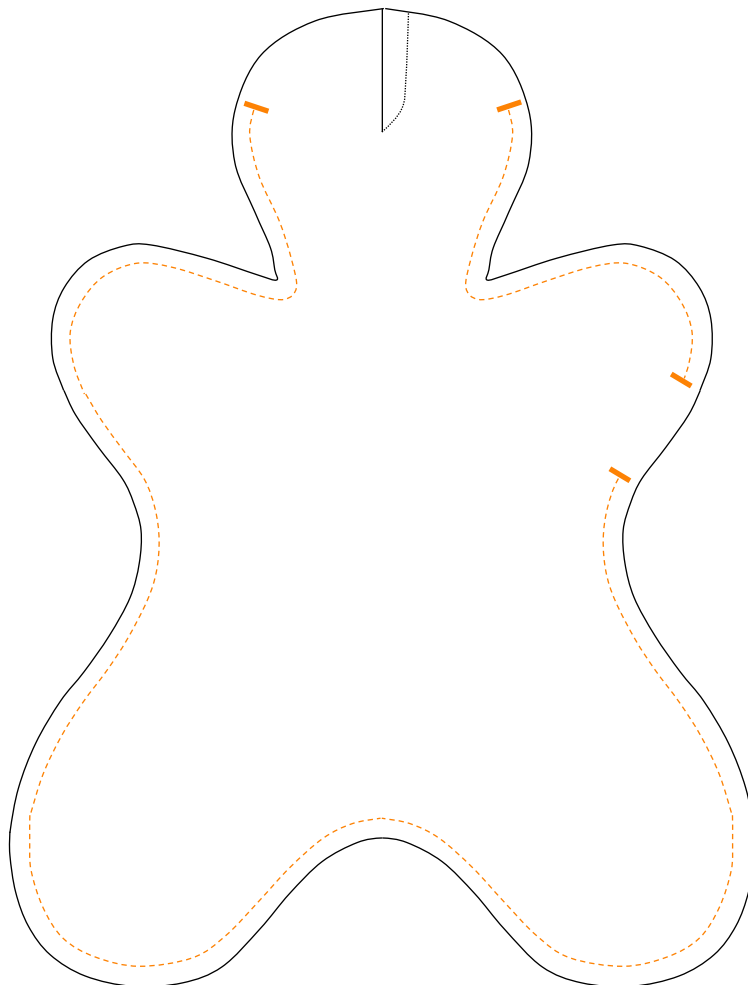


Repeat steps 3,4,5 for the second ear.

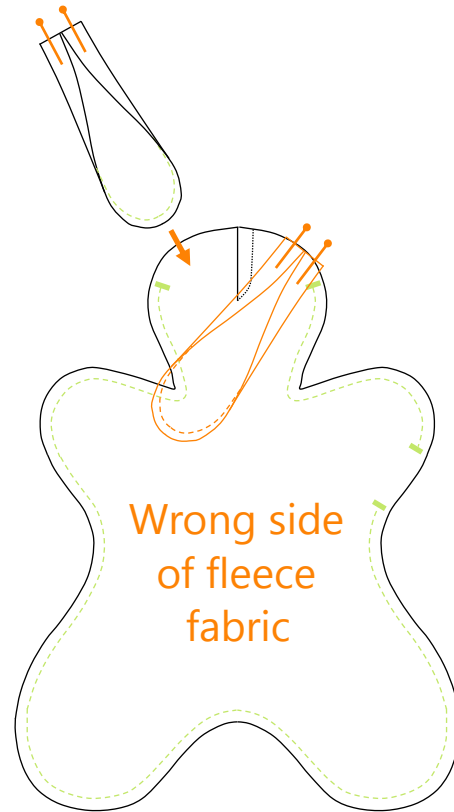
STEP 6 : Place the body front and back right sides together. Pin around edges to keep the fleece from sliding when sewing.



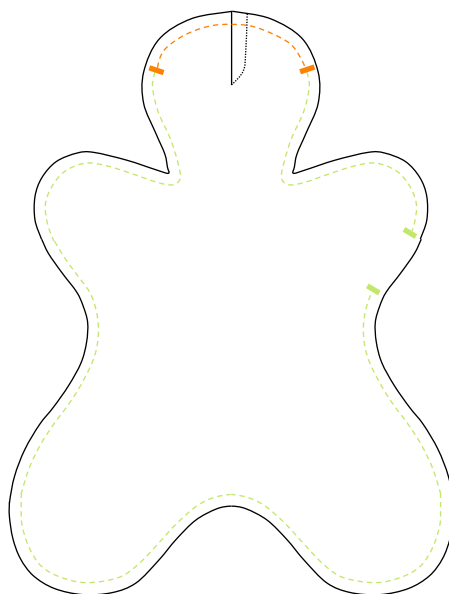
STEP 7 : Sew around the body leaving a 5cm gap under one arm and a gap around the top half of the head.



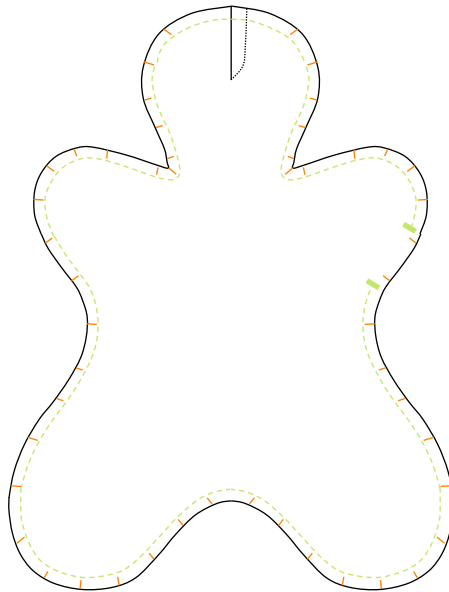
STEP 8: Position each of the ears inside the top of the head. The front of the ear should be against the right side of the fleece front fabric. Leave a 1.5cm gap between the seam at the top of the head and the side of each ear. Pin the ears in place.



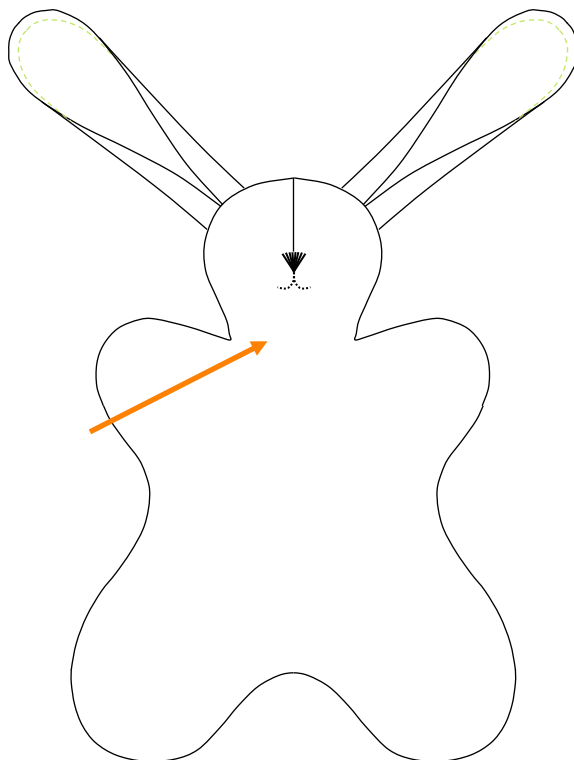
STEP 9: Sew around the top of the head closing the gap.



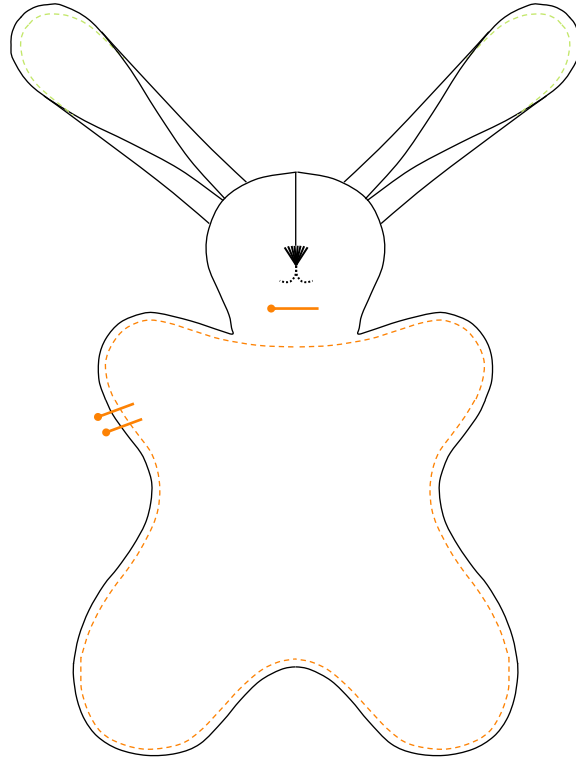
STEP 10: Snip into the raw edge of the fabric at 1.5cm intervals ensuring at least 2mm of fabric remains between the line of stitching and the scissors.



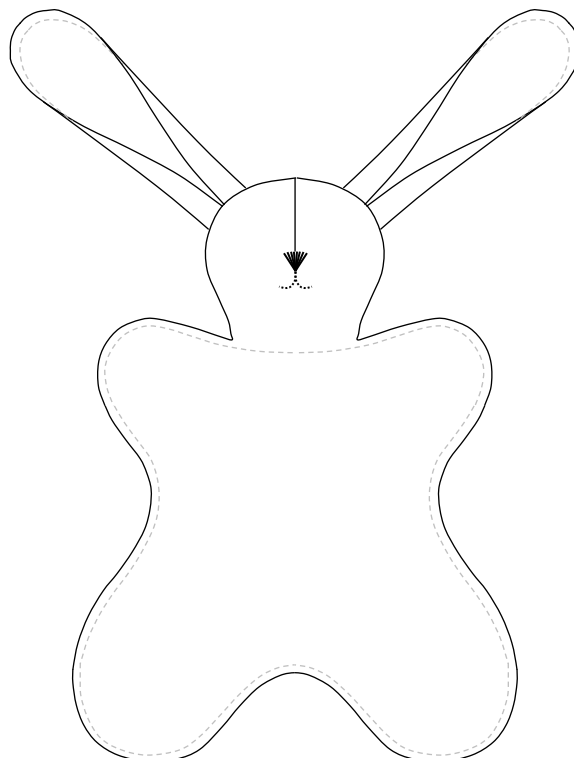
STEP 11: Turn out the right way through the gap under the arm. Use this gap to fill the head with stuffing.



STEP 12: Push the stuffing up as high as possible in the head and pin across the neck to keep the bulk out of the way. Fold the edges of the under-arm opening inside and pin closed. Topstitch around the body and across the neck.



The Flopsie Wabbit is finished!



Printing

Print only page 11 first. Using a metric ruler, check that the printed ruler picture on page 11 accurately measures 12cm.

If this is not accurate to within 1mm, your page has not printed to scale and you will need to troubleshoot the issue with your printer. Find out more about printing to scale on the Pattern Orchard website at www.patternorchard.com

Once page 11 has printed to scale, print pages 12-14.

Each page has a double dot dashed border around it.

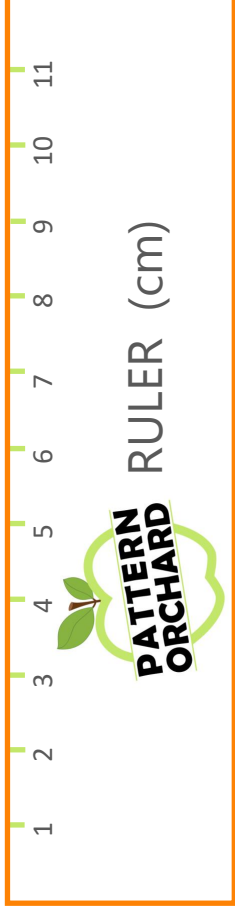
Cut along this border line on both pages. 

Align the rectangles using the apples as a guide. Tape or glue.

Now the pattern is assembled, cut out the pattern piece along the solid black line.

If a page gets damaged, you can print it again.







FLOPSIE WABIT

EAR PIECE

CUT 4 (2 woven)

+ (2 soft) fabric

© PATTERN ORCHARD 2017





**PATTI
ORCH**

FLOPSIE V

LEARN TO SEW WITH

BODY PILLOW

CUT 2 (1 woven) + (1 fabric)

Finished size 33x27cm (head to toe)

© **PATTERN ORCH**

**ERN
ARD**

**NABIT
TH STUFFING
ECE**

1 soft) fabric
(to toe excluding ears)

ARD 2017

