



Project Sheet

BURP CLOTHS

WHY ARE THEY NEEDED?

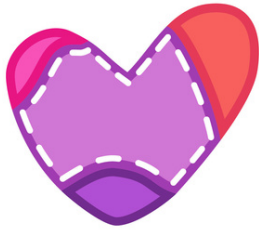
Burp cloths are one of our most-requested items, sent out by the thousands each year. They are a core item for our partner charities and bring comfort and care to vulnerable parents in refuges, refugee and homeless communities, and to foster carers looking after little ones.

WHAT FABRIC DO I USE TO MAKE THEM?

Layer recommendations are below, with thanks to the wonderful volunteers who attend The Sewing Lair (Beenleigh) Thursday Charity Sewing Group:

- 1 cotton + 1 toweling; OR
- 1 cotton + 2 flannelette; OR
- 1 cotton + 1 flannelette + 1 batting: OR
- 1 batting + 2 flannelette, OR
- 3 x flannelette





Sewing
FOR CHARITY
AUSTRALIA

Project Sheet

BURP CLOTHS

WHAT FABRIC DO I USE TO MAKE THEM CONT...

- Age-appropriate prints
- Plain colours
- Neutrals

PATTERN/ TUTORIAL

On the next page is a double-contoured template kindly shared by The Sewing Lair's Thursday Charity Sewing Group. You don't have to use it, but with their countless burp cloths made, this pattern is a proven favourite!

No raw edges, crimped edges or exposed overlocked edges.

Special Mention: We supply A Brave Life with 400 burp cloths each month to support at-risk young parents through their Baby Bundle Program. They prefer double-contour with a bias binding finish, but will also gratefully accept turned and top-stitched. First Nations print burp cloths are especially requested

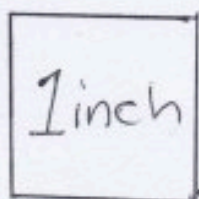
HOW TO GET DONATIONS TO SFCA

Thanks for being part of our amazing volunteer crew! Your kindness makes a big difference. Please add a quick label with type, size & project to your donation – it makes sorting a breeze!

MAIL TO: 38 Bladensburg Drive, Waterford QLD 4133

DELIVER TO: The Sewing Lair Beenleigh or Moorooka during opening hours

Double Contour
Burp Cloth Template



Fold ↓